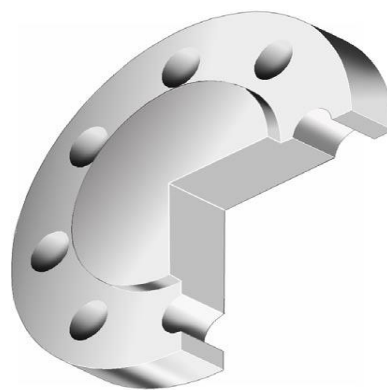
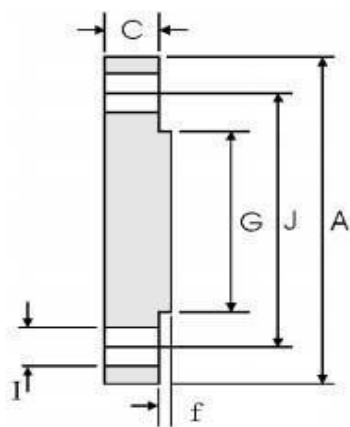


Blind Flange

Hebei Lufeng Piping Equipmnet Co.,Ltd.

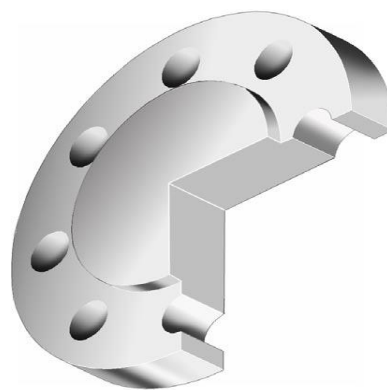
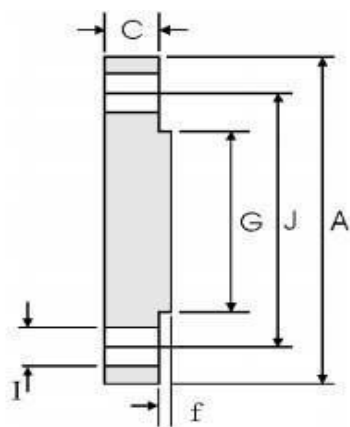


Class 150 (ASME B16.5)

DN	NPS	Overall Diameter	Thickness (Min.)	Height of Face	Diameter of Face	Diameter of Bolt Holes (mm / in.)	Number of Bolts	Diameter of Bolt (in.)	Diameter of Bolt Circle
		A	C	f	G	I		n	J
15	1/2	90	9.6	2	34.9	15.9 (5/8)	4	1/2	60.3
20	3/4	100	11.2	2	42.9	15.9 (5/8)	4	1/2	69.9
25	1	110	12.7	2	50.8	15.9 (5/8)	4	1/2	79.4
32	1 1/4	115	14.3	2	63.5	15.9 (5/8)	4	1/2	88.9
40	1 1/2	125	15.9	2	73.0	15.9 (5/8)	4	1/2	98.4
50	2	150	17.5	2	92.1	19.1 (3/4)	4	5/8	120.7
65	2 1/2	180	20.7	2	104.8	19.1 (3/4)	4	5/8	139.7
80	3	190	22.3	2	127.0	19.1 (3/4)	4	5/8	152.4
90	3 1/2	215	22.3	2	139.7	19.1 (3/4)	8	5/8	177.8
100	4	230	22.3	2	157.2	19.1 (3/4)	8	5/8	190.5
125	5	255	22.3	2	185.7	22.2 (7/8)	8	3/4	215.9
150	6	280	23.9	2	215.9	22.2 (7/8)	8	3/4	241.3
200	8	345	27.0	2	269.9	22.2 (7/8)	8	3/4	298.5
250	10	405	28.6	2	323.8	25.4 (1)	12	7/8	362.0
300	12	485	30.2	2	381.0	25.4 (1)	12	7/8	431.8
350	14	535	33.4	2	412.8	28.6 (1-1/8)	12	1	476.3
400	16	595	35.0	2	469.9	28.6 (1-1/8)	16	1	539.8
450	18	635	38.1	2	533.4	31.8 (1-1/4)	16	1-1/8	577.9
500	20	700	41.3	2	584.2	31.8 (1-1/4)	20	1-1/8	635.0
600	24	815	46.1	2	692.2	34.9 (1-3/8)	20	1-1/4	749.3

Blind Flange

Hebei Lufeng Piping Equipmnet Co.,Ltd.

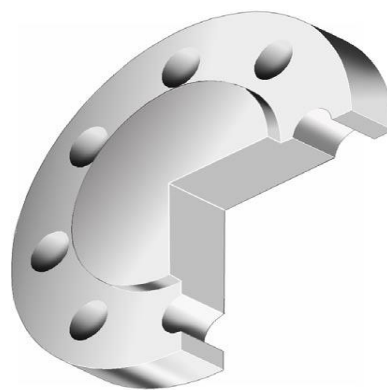
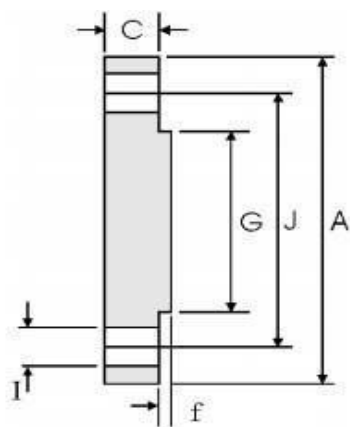


Class 300 (ASME B16.5)

DN	NPS	Overall Diameter	Thickness (Min.)	Height of Face	Diameter of Face	Diameter of Bolt Holes (mm / in.)	Number of Bolts	Diameter of Bolt (in.)	Diameter of Bolt Circle
		A	C	f	G	I		J	
15	1/2	95	12.7	2	34.9	15.9 (5/8)	4	1/2	66.7
20	3/4	115	14.3	2	42.9	19.1 (3/4)	4	5/8	82.6
25	1	125	15.9	2	50.8	19.1 (3/4)	4	5/8	88.9
32	1 1/4	135	17.5	2	63.5	19.1 (3/4)	4	5/8	98.4
40	1 1/2	155	19.1	2	73.0	22.2 (7/8)	4	3/4	114.3
50	2	165	20.7	2	92.1	19.1 (3/4)	8	5/8	127.0
65	2 1/2	190	23.9	2	104.8	22.2 (7/8)	8	3/4	149.2
80	3	210	27.0	2	127.0	22.2 (7/8)	8	3/4	168.3
90	3 1/2	230	28.6	2	139.7	22.2 (7/8)	8	3/4	184.2
100	4	255	30.2	2	157.2	22.2 (7/8)	8	3/4	200.0
125	5	280	33.4	2	185.7	22.2 (7/8)	8	3/4	235.0
150	6	320	35.0	2	215.9	22.2 (7/8)	12	3/4	269.9
200	8	380	39.7	2	269.9	25.4 (1)	12	7/8	330.2
250	10	445	46.1	2	323.8	28.6 (1-1/8)	16	1	387.4
300	12	520	49.3	2	381.0	31.8 (1-1/4)	16	1-1/8	450.8
350	14	585	52.4	2	412.8	31.8 (1-1/4)	20	1-1/8	514.4
400	16	650	55.6	2	469.9	34.9 (1-3/8)	20	1-1/4	571.5
450	18	710	58.8	2	533.4	34.9 (1-3/8)	24	1-1/4	628.6
500	20	775	62.0	2	584.2	34.9 (1-3/8)	24	1-1/4	685.8
600	24	915	68.3	2	692.2	41.3 (1-5/8)	24	1-1/2	812.8

Blind Flange

Hebei Lufeng Piping Equipmnet Co.,Ltd.

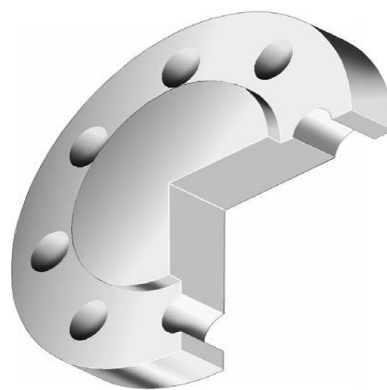
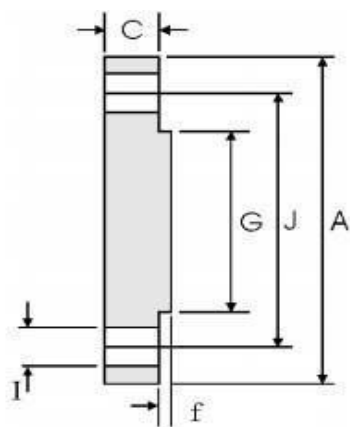


Class 400 (ASME B16.5)

DN	NPS	Overall Diameter	Thickness (Min.)	Height of Face	Diameter of Face	Diameter of Bolt Holes (mm / in.)	Number of Bolts	Diameter of Bolt (in.)	Diameter of Bolt Circle
		A	C	f	G	I		J	
15	1/2	95	14.3	7	34.9	15.9 (5/8)	4	1/2	66.7
20	3/4	115	15.9	7	42.9	19.1 (3/4)	4	5/8	82.6
25	1	125	17.5	7	50.8	19.1 (3/4)	4	5/8	88.9
32	1 1/4	135	20.7	7	63.5	19.1 (3/4)	4	5/8	98.4
40	1 1/2	155	22.3	7	73.0	22.2 (7/8)	4	3/4	114.3
50	2	165	25.4	7	92.1	19.1 (3/4)	8	5/8	127.0
65	2 1/2	190	28.6	7	104.8	22.2 (7/8)	8	3/4	149.2
80	3	210	31.8	7	127.0	22.2 (7/8)	8	3/4	168.3
90	3 1/2	230	35.0	7	139.7	25.4 (1)	8	7/8	184.2
100	4	255	35.0	7	157.2	25.4 (1)	8	7/8	200.0
125	5	280	38.1	7	185.7	25.4 (1)	8	7/8	235.0
150	6	320	41.3	7	215.9	25.4 (1)	12	7/8	269.9
200	8	380	47.7	7	269.9	28.6 (1-1/8)	12	1	330.2
250	10	445	54.0	7	323.8	31.8 (1-1/4)	16	1-1/8	387.4
300	12	520	57.2	7	381.0	34.9 (1-3/8)	16	1-1/4	450.8
350	14	585	60.4	7	412.8	34.9 (1-3/8)	20	1-1/4	514.4
400	16	650	63.5	7	469.9	38.1 (1-1/2)	20	1-3/8	571.5
450	18	710	66.7	7	533.4	38.1 (1-1/2)	24	1-3/8	628.6
500	20	775	69.9	7	584.2	41.3 (1-5/8)	24	1-1/2	685.8
600	24	915	76.2	7	692.2	47.6 (1-7/8)	24	1-3/4	812.8

Blind Flange

Hebei Lufeng Piping Equipmnet Co.,Ltd.

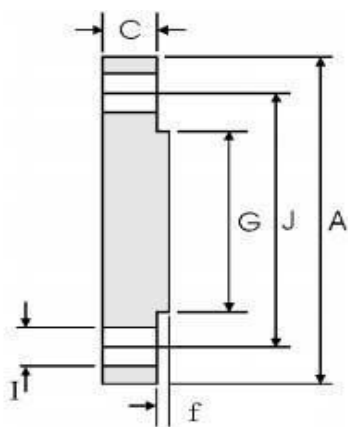


Class 600 (ASME B16.5)

DN	NPS	Overall Diameter	Thickness (Min.)	Height of Face	Diameter of Face	Diameter of Bolt Holes (mm / in.)	Number of Bolts	Diameter of Bolt (in.)	Diameter of Bolt Circle
		A	C	f	G	I		J	
15	1/2	95	14.3	7	34.9	15.9 (5/8)	4	1/2	66.7
20	3/4	115	15.9	7	42.9	19.1 (3/4)	4	5/8	82.6
25	1	125	17.5	7	50.8	19.1 (3/4)	4	5/8	88.9
32	1 1/4	135	20.7	7	63.5	19.1 (3/4)	4	5/8	98.4
40	1 1/2	155	22.3	7	73.0	22.2 (7/8)	4	3/4	114.3
50	2	165	25.4	7	92.1	19.1 (3/4)	8	5/8	127.0
65	2 1/2	190	28.6	7	104.8	22.2 (7/8)	8	3/4	149.2
80	3	210	31.8	7	127.0	22.2 (7/8)	8	3/4	168.3
90	3 1/2	230	35.0	7	139.7	25.4 (1)	8	7/8	184.2
100	4	275	38.1	7	157.2	25.4 (1)	8	7/8	215.9
125	5	330	44.5	7	185.7	28.6 (1-1/8)	8	1	266.7
150	6	355	47.7	7	215.9	28.6 (1-1/8)	12	1	292.1
200	8	420	55.6	7	269.9	31.8 (1-1/4)	12	1-1/8	349.2
250	10	510	63.5	7	323.8	34.9 (1-3/8)	16	1-1/4	431.8
300	12	560	66.7	7	381.0	34.9 (1-3/8)	20	1-1/4	489.0
350	14	605	69.9	7	412.8	38.1 (1-1/2)	20	1-3/8	527.0
400	16	685	76.2	7	469.9	41.3 (1-5/8)	20	1-1/2	603.2
450	18	745	82.6	7	533.4	44.5 (1-3/4)	20	1-5/8	654.0
500	20	815	88.9	7	584.2	44.5 (1-3/4)	24	1-5/8	723.9
600	24	940	101.6	7	692.2	50.8 (2)	24	1-7/8	838.2

Blind Flange

Hebei Lufeng Piping Equipmnet Co.,Ltd.

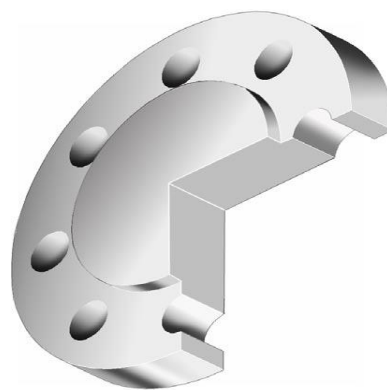
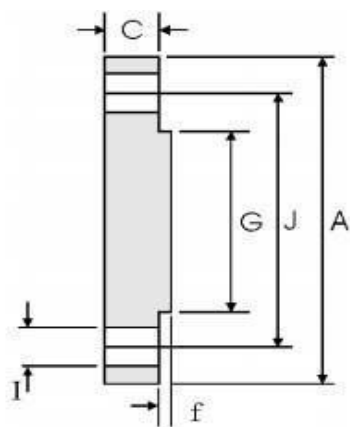


Class 900 (ASME B16.5)

DN	NPS	Overall Diameter	Thickness (Min.)	Height of Face	Diameter of Face	Diameter of Bolt Holes (mm / in.)	Number of Bolts	Diameter of Bolt (in.)	Diameter of Bolt Circle
		A	C	f	G	I		n	J
15	1/2	120	22.3	7	34.9	22.2 (7/8)	4	3/4	82.6
20	3/4	130	25.4	7	42.9	22.2 (7/8)	4	3/4	88.9
25	1	150	28.6	7	50.8	25.4 (1)	4	7/8	101.6
32	1 1/4	160	28.6	7	63.5	25.4 (1)	4	7/8	111.1
40	1 1/2	180	31.8	7	73.0	28.6 (1-1/8)	4	1	123.8
50	2	215	38.1	7	92.1	25.4 (1)	8	7/8	165.1
65	2 1/2	245	41.3	7	104.8	28.6 (1-1/8)	8	1	190.5
80	3	240	38.1	7	127.0	25.4 (1)	8	7/8	190.5
100	4	290	44.5	7	157.2	31.8 (1-1/4)	8	1-1/8	235.0
125	5	350	50.8	7	185.7	34.9 (1-3/8)	8	1-1/4	279.4
150	6	380	55.6	7	215.9	31.8 (1-1/4)	12	1-1/8	317.5
200	8	470	63.5	7	269.9	38.1 (1-1/2)	12	1-3/8	393.7
250	10	545	69.9	7	323.8	38.1 (1-1/2)	16	1-3/8	469.9
300	12	610	79.4	7	381.0	38.1 (1-1/2)	20	1-3/8	533.4
350	14	640	85.8	7	412.8	41.3 (1-5/8)	20	1-1/2	558.8
400	16	705	88.9	7	469.9	44.5 (1-3/4)	20	1-5/8	616.0
450	18	785	101.6	7	533.4	50.8 (2)	20	1-7/8	685.8
500	20	855	108.0	7	584.2	54.0 (2-1/8)	20	2	749.3
600	24	1040	139.7	7	692.2	66.7 (2-5/8)	20	2-1/2	901.7

Blind Flange

Hebei Lufeng Piping Equipmnet Co.,Ltd.

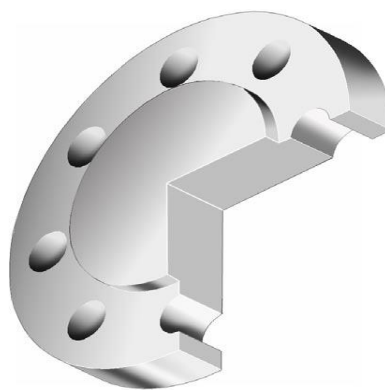
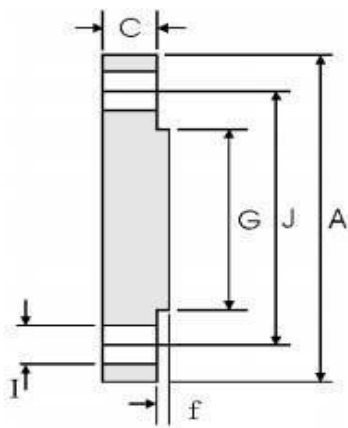


Class 1500 (ASME B16.5)

DN	NPS	Overall Diameter	Thickness (Min.)	Height of Face	Diameter of Face	Diameter of Bolt Holes (mm / in.)	Number of Bolts	Diameter of Bolt (in.)	Diameter of Bolt Circle
		A	C	f	G	I		n	J
15	1/2	120	22.3	7	34.9	22.2 (7/8)	4	3/4	82.6
20	3/4	130	25.4	7	42.9	22.2 (7/8)	4	3/4	88.9
25	1	150	28.6	7	50.8	25.4 (1)	4	7/8	101.6
32	1 1/4	160	28.6	7	63.5	25.4 (1)	4	7/8	111.1
40	1 1/2	180	31.8	7	73.0	28.6 (1-1/8)	4	1	123.8
50	2	215	38.1	7	92.1	25.4 (1)	8	7/8	165.1
65	2 1/2	245	41.3	7	104.8	28.6 (1-1/8)	8	1	190.5
80	3	265	47.7	7	127.0	31.8 (1-1/4)	8	1-1/8	203.2
100	4	310	54.0	7	157.2	34.9 (1-3/8)	8	1-1/4	241.3
125	5	375	73.1	7	185.7	41.3 (1-5/8)	8	1-1/2	292.1
150	6	395	82.6	7	215.9	38.1 (1-1/2)	12	1-3/8	317.5
200	8	485	92.1	7	269.9	44.5 (1-3/4)	12	1-5/8	393.7
250	10	585	108.0	7	323.8	50.8 (2)	12	1-7/8	482.6
300	12	675	123.9	7	381.0	54.0 (2-1/8)	16	2	571.5
350	14	750	133.4	7	412.8	60.3 (2-3/8)	16	2-1/4	635.0
400	16	825	146.1	7	469.9	66.7 (2-5/8)	16	2-1/2	704.8
450	18	915	162.0	7	533.4	73.0 (2-7/8)	16	2-3/4	774.7
500	20	985	177.8	7	584.2	79.4 (3-1/8)	16	3	831.8
600	24	1170	203.2	7	692.2	92.1 (3-5/8)	16	3-1/2	990.6

Blind Flange

Hebei Lufeng Piping Equipmnet Co.,Ltd.



Class 2500 (ASME B16.5)

DN	NPS	Overall Diameter	Thickness (Min.)	Height of Face	Diameter of Face	Diameter of Bolt Holes (mm / in.)	Number of Bolts	Diameter of Bolt (in.)	Diameter of Bolt Circle
		A	C	f	G	I		n	J
15	1/2	135	30.2	7	34.9	22.2 (7/8)	4	3/4	88.9
20	3/4	140	31.8	7	42.9	22.2 (7/8)	4	3/4	95.2
25	1	160	35.0	7	50.8	25.4 (1)	4	7/8	108.0
32	1 1/4	185	38.1	7	63.5	28.6 (1-1/8)	4	1	130.2
40	1 1/2	205	44.5	7	73.0	31.8 (1-1/4)	4	1-1/8	146.0
50	2	235	50.9	7	92.1	28.6 (1-1/8)	8	1	171.4
65	2 1/2	265	57.2	7	104.8	31.8 (1-1/4)	8	1-1/8	196.8
80	3	305	66.7	7	127.0	34.9 (1-3/8)	8	1-1/4	228.6
100	4	355	76.2	7	157.2	41.3 (1-5/8)	8	1-1/2	273.0
125	5	420	92.1	7	185.7	47.6 (1-7/8)	8	1-3/4	323.8
150	6	485	108.0	7	215.9	54.0 (2-1/8)	8	2	368.3
200	8	550	127.0	7	269.9	54.0 (2-1/8)	12	2	438.2
250	10	675	165.1	7	323.8	66.7 (2-5/8)	12	2-1/2	539.8
300	12	760	184.2	7	381.0	73.0 (2-7/8)	12	2-3/4	619.1