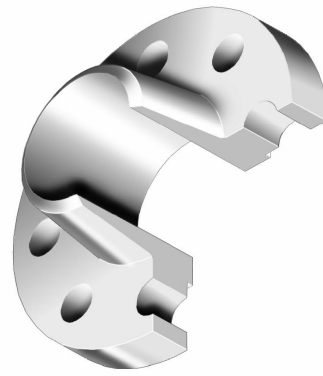
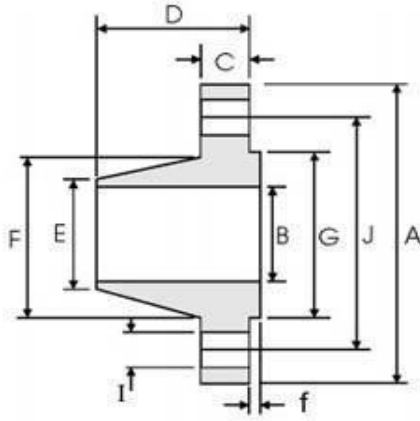


Class 150 (ASME B16.5)

DN	NPS	Overall Diameter	Inside Diameter	Thickness of Flange(Min.)	Overall Length	Diameter at Bevel	Diameter of Hub	Diameter of Face	Height of Face	Diameter of Bolt Holes (mm / in.)	Number of Bolts	Diameter of Bolt (in.)	Diameter of Bolt Circle
		A	B	C	D	E	F	G	f	I	n	J	
15	1/2	90	15.8	9.6	46	21.3	30	34.9	2	15.9 (5/8)	4	1/2	60.3
20	3/4	100	20.9	11.2	51	26.7	38	42.9	2	15.9 (5/8)	4	1/2	69.9
25	1	110	26.6	12.7	54	33.4	49	50.8	2	15.9 (5/8)	4	1/2	79.4
32	1 1/4	115	35.1	14.3	56	42.2	59	63.5	2	15.9 (5/8)	4	1/2	88.9
40	1 1/2	125	40.9	15.9	60	48.3	65	73.0	2	15.9 (5/8)	4	1/2	98.4
50	2	150	52.5	17.5	62	60.3	78	92.1	2	19.1 (3/4)	4	5/8	120.7
65	2 1/2	180	62.7	20.7	68	73.0	90	104.8	2	19.1 (3/4)	4	5/8	139.7
80	3	190	77.9	22.3	68	88.9	108	127.0	2	19.1 (3/4)	4	5/8	152.4
90	3 1/2	215	90.1	22.3	70	101.6	122	139.7	2	19.1 (3/4)	8	5/8	177.8
100	4	230	102.3	22.3	75	114.3	135	157.2	2	19.1 (3/4)	8	5/8	190.5
125	5	255	128.2	22.3	87	141.3	164	185.7	2	22.2 (7/8)	8	3/4	215.9
150	6	280	154.1	23.9	87	168.3	192	215.9	2	22.2 (7/8)	8	3/4	241.3
200	8	345	202.7	27.0	100	219.1	246	269.9	2	22.2 (7/8)	8	3/4	298.5
250	10	405	254.6	28.6	100	273.0	305	323.8	2	25.4 (1)	12	7/8	362.0
300	12	485	304.8	30.2	113	323.8	365	381.0	2	25.4 (1)	12	7/8	431.8
350	14	535	-	33.4	125	355.6	400	412.8	2	28.6 (1-1/8)	12	1	476.3
400	16	595	-	35.0	125	406.4	457	469.9	2	28.6 (1-1/8)	16	1	539.8
450	18	635	-	38.1	138	457.0	505	533.4	2	31.8 (1-1/4)	16	1-1/8	577.9
500	20	700	-	41.3	143	508.0	559	584.2	2	31.8 (1-1/4)	20	1-1/8	635.0
600	24	815	-	46.1	151	610.0	663	692.2	2	34.9 (1-3/8)	20	1-1/4	749.3

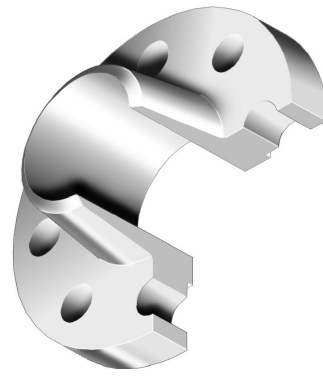
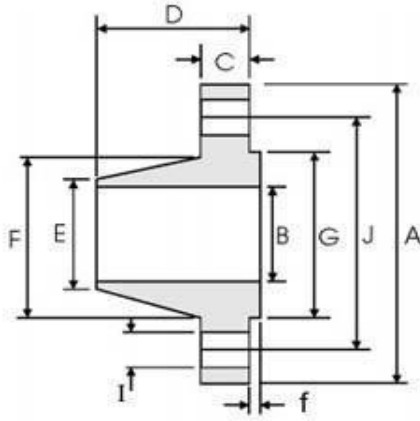
Dimension B corresponds to the pipe inside diameter. Values quoted assume 40S/Standard wall thickness.



Class 300 (ASME B16.5)

DN	NPS	Overall Diameter	Inside Diameter	Thickness of Flange(Min.)	Overall Length	Diameter at Bevel	Diameter of Hub	Diameter of Face	Height of Face	Diameter of Bolt Holes (mm / in.)	Number of Bolts	Diameter of Bolt (in.)	Diameter of Bolt Circle
		A	B	C	D	E	F	G	f	I	n	J	
15	1/2	95	15.8	12.7	51	21.3	38	34.9	2	15.9 (5/8)	4	1/2	66.7
20	3/4	115	20.9	14.3	56	26.7	48	42.9	2	19.1 (3/4)	4	5/8	82.6
25	1	125	26.6	15.9	60	33.4	54	50.8	2	19.1 (3/4)	4	5/8	88.9
32	1 1/4	135	35.1	17.5	64	42.2	64	63.5	2	19.1 (3/4)	4	5/8	98.4
40	1 1/2	155	40.9	19.1	67	48.3	70	73	2	22.2 (7/8)	4	3/4	114.3
50	2	165	52.5	20.7	68	60.3	84	92.1	2	19.1 (3/4)	8	5/8	127.0
65	2 1/2	190	62.7	23.9	75	73.0	100	104.8	2	22.2 (7/8)	8	3/4	149.2
80	3	210	77.9	27.0	78	88.9	117	127	2	22.2 (7/8)	8	3/4	168.3
90	3 1/2	230	90.1	28.6	79	101.6	133	139.7	2	22.2 (7/8)	8	3/4	184.2
100	4	255	102.3	30.2	84	114.3	146	157.2	2	22.2 (7/8)	8	3/4	200.0
125	5	280	128.2	33.4	97	141.3	178	185.7	2	22.2 (7/8)	8	3/4	235.0
150	6	320	154.1	35.0	97	168.3	206	215.9	2	22.2 (7/8)	12	3/4	269.9
200	8	380	202.7	39.7	110	219.1	260	269.9	2	25.4 (1)	12	7/8	330.2
250	10	445	254.6	46.1	116	273.0	321	323.8	2	28.6 (1-1/8)	16	1	387.4
300	12	520	304.8	49.3	129	323.8	375	381	2	31.8 (1-1/4)	16	1-1/8	450.8
350	14	585	-	52.4	141	355.6	425	412.8	2	31.8 (1-1/4)	20	1-1/8	514.4
400	16	650	-	55.6	144	406.4	483	469.9	2	34.9 (1-3/8)	20	1-1/4	571.5
450	18	710	-	58.8	157	457.0	533	533.4	2	34.9 (1-3/8)	24	1-1/4	628.6
500	20	775	-	62.0	160	508.0	587	584.2	2	34.9 (1-3/8)	24	1-1/4	685.8
600	24	915	-	68.3	167	610.0	702	692.2	2	41.3 (1-5/8)	24	1-1/2	812.8

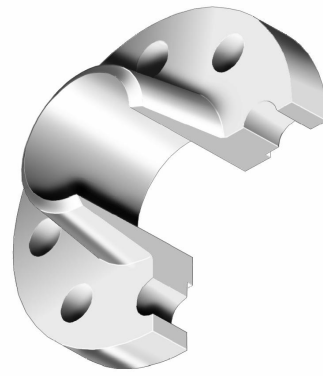
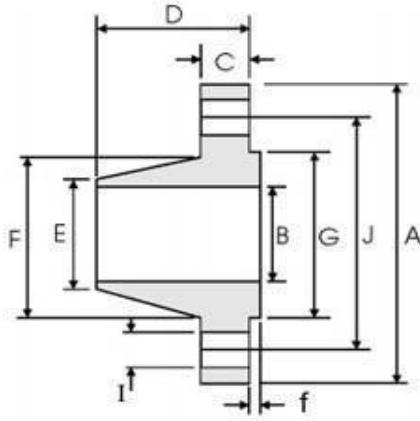
Dimension B corresponds to the pipe inside diameter. Values quoted assume 40S/Standard wall thickness.



Class 400 (ASME B16.5)

DN	NPS	Overall Diameter	Inside Diameter	Thickness of Flange(Min.)	Overall Length	Diameter at Bevel	Diameter of Hub	Diameter of Face	Height of Face	Diameter of Bolt Holes (mm / in.)	Number of Bolts	Diameter of Bolt (in.)	Diameter of Bolt Circle
		A	B	C	D	E	F	G	f	I	n	J	
15	1/2	95	-	14.3	52	21.3	38	34.9	7	15.9 (5/8)	4	1/2	66.7
20	3/4	115	-	15.9	57	26.7	48	42.9	7	19.1 (3/4)	4	5/8	82.6
25	1	125	-	17.5	62	33.4	54	50.8	7	19.1 (3/4)	4	5/8	88.9
32	1 1/4	135	-	20.7	67	42.2	64	63.5	7	19.1 (3/4)	4	5/8	98.4
40	1 1/2	155	-	22.3	70	48.3	70	73	7	22.2 (7/8)	4	3/4	114.3
50	2	165	-	25.4	73	60.3	84	92.1	7	19.1 (3/4)	8	5/8	127.0
65	2 1/2	190	-	28.6	79	73.0	100	104.8	7	22.2 (7/8)	8	3/4	149.2
80	3	210	-	31.8	83	88.9	117	127	7	22.2 (7/8)	8	3/4	168.3
90	3 1/2	230	-	35.0	86	101.6	133	139.7	7	25.4 (1)	8	7/8	184.2
100	4	255	-	35.0	89	114.3	146	157.2	7	25.4 (1)	8	7/8	200.0
125	5	280	-	38.1	102	141.3	178	185.7	7	25.4 (1)	8	7/8	235.0
150	6	320	-	41.3	103	168.3	206	215.9	7	25.4 (1)	12	7/8	269.9
200	8	380	-	47.7	117	219.1	260	269.9	7	28.6 (1-1/8)	12	1	330.2
250	10	445	-	54.0	124	273.0	321	323.8	7	31.8 (1-1/4)	16	1-1/8	387.4
300	12	520	-	57.2	137	323.8	375	381	7	34.9 (1-3/8)	16	1-1/4	450.8
350	14	585	-	60.4	149	355.6	425	412.8	7	34.9 (1-3/8)	20	1-1/4	514.4
400	16	650	-	63.5	152	406.4	483	469.9	7	38.1 (1-1/2)	20	1-3/8	571.5
450	18	710	-	66.7	165	457.0	533	533.4	7	38.1 (1-1/2)	24	1-3/8	628.6
500	20	775	-	69.9	168	508.0	587	584.2	7	41.3 (1-5/8)	24	1-1/2	685.8
600	24	915	-	76.2	175	610.0	702	692.2	7	47.6 (1-7/8)	24	1-3/4	812.8

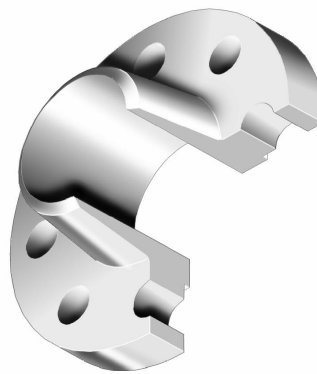
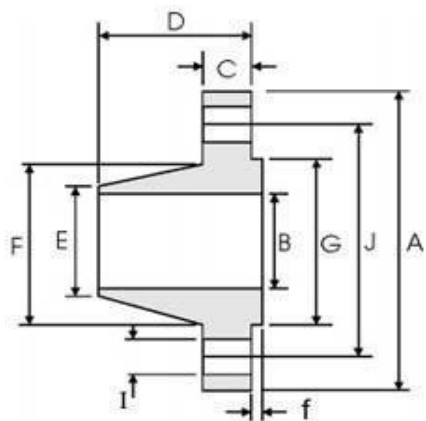
Dimension B to be specified by purchaser



Class 600 (ASME B16.5)

DN	NPS	Overall Diameter	Inside Diameter	Thickness of Flange(Min.)	Overall Length	Diameter at Bevel	Diameter of Hub	Diameter of Face	Height of Face	Diameter of Bolt Holes (mm / in.)	Number of Bolts	Diameter of Bolt (in.)	Diameter of Bolt Circle
		A	B	C	D	E	F	G	f	I	n	J	
15	1/2	95	-	14.3	52	21.3	38	34.9	7	15.9 (5/8)	4	1/2	66.7
20	3/4	115	-	15.9	57	26.7	48	42.9	7	19.1 (3/4)	4	5/8	82.6
25	1	125	-	17.5	62	33.4	54	50.8	7	19.1 (3/4)	4	5/8	88.9
32	1 1/4	135	-	20.7	67	42.2	64	63.5	7	19.1 (3/4)	4	5/8	98.4
40	1 1/2	155	-	22.3	70	48.3	70	73	7	22.2 (7/8)	4	3/4	114.3
50	2	165	-	25.4	73	60.3	84	92.1	7	19.1 (3/4)	8	5/8	127.0
65	2 1/2	190	-	28.6	79	73.0	100	104.8	7	22.2 (7/8)	8	3/4	149.2
80	3	210	-	31.8	83	88.9	117	127	7	22.2 (7/8)	8	3/4	168.3
90	3 1/2	230	-	35.0	86	101.6	133	139.7	7	25.4 (1)	8	7/8	184.2
100	4	275	-	38.1	102	114.3	152	157.2	7	25.4 (1)	8	7/8	215.9
125	5	330	-	44.5	114	141.3	189	185.7	7	28.6 (1-1/8)	8	1	266.7
150	6	355	-	47.7	117	168.3	222	215.9	7	28.6 (1-1/8)	12	1	292.1
200	8	420	-	55.6	133	219.1	273	269.9	7	31.8 (1-1/4)	12	1-1/8	349.2
250	10	510	-	63.5	152	273.0	343	323.8	7	34.9 (1-3/8)	16	1-1/4	431.8
300	12	560	-	66.7	156	323.8	400	381	7	34.9 (1-3/8)	20	1-1/4	489.0
350	14	605	-	69.9	165	355.6	432	412.8	7	38.1 (1-1/2)	20	1-3/8	527.0
400	16	685	-	76.2	178	406.4	495	469.9	7	41.3 (1-5/8)	20	1-1/2	603.2
450	18	745	-	82.6	184	457.0	546	533.4	7	44.5 (1-3/4)	20	1-5/8	654.0
500	20	815	-	88.9	190	508.0	610	584.2	7	44.5 (1-3/4)	24	1-5/8	723.9
600	24	940	-	101.6	203	610.0	718	692.2	7	50.8 (2)	24	1-7/8	838.2

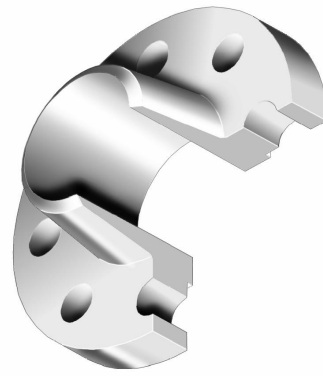
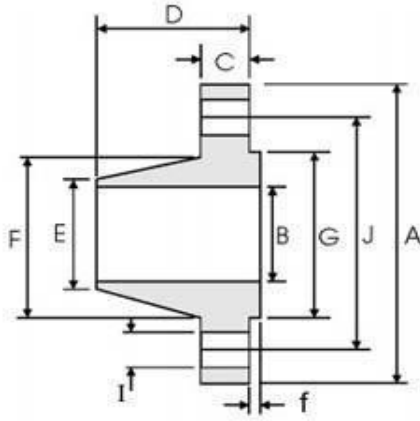
Dimension B to be specified by purchaser



Class 900 (ASME B16.5)

DN	NPS	Overall Diameter	Inside Diameter	Thickness of Flange(Min.)	Overall Length	Diameter at Bevel	Diameter of Hub	Diameter of Face	Height of Face	Diameter of Bolt Holes (mm / in.)	Number of Bolts	Diameter of Bolt (in.)	Diameter of Bolt Circle
		A	B	C	D	E	F	G	f	I	n	J	
15	1/2	120	-	22.3	60	21.3	38	34.9	7	22.2 (7/8)	4	3/4	82.6
20	3/4	130	-	25.4	70	26.7	44	42.9	7	22.2 (7/8)	4	3/4	88.9
25	1	150	-	28.6	73	33.4	52	50.8	7	25.4 (1)	4	7/8	101.6
32	1 1/4	160	-	28.6	73	42.2	64	63.5	7	25.4 (1)	4	7/8	111.1
40	1 1/2	180	-	31.8	83	48.3	70	73	7	28.6 (1-1/8)	4	1	123.8
50	2	215	-	38.1	102	60.3	105	92.1	7	25.4 (1)	8	7/8	165.1
65	2 1/2	245	-	41.3	105	73.0	124	104.8	7	28.6 (1-1/8)	8	1	190.5
80	3	240	-	38.1	102	88.9	127	127	7	25.4 (1)	8	7/8	190.5
100	4	290	-	44.5	114	114.3	159	157.2	7	31.8 (1-1/4)	8	1-1/8	235.0
125	5	350	-	50.8	127	141.3	190	185.7	7	34.9 (1-3/8)	8	1-1/4	279.4
150	6	380	-	55.6	140	168.3	235	215.9	7	31.8 (1-1/4)	12	1-1/8	317.5
200	8	470	-	63.5	162	219.1	298	269.9	7	38.1 (1-1/2)	12	1-3/8	393.7
250	10	545	-	69.9	184	273.0	368	323.8	7	38.1 (1-1/2)	16	1-3/8	469.9
300	12	610	-	79.4	200	323.8	419	381	7	38.1 (1-1/2)	20	1-3/8	533.4
350	14	640	-	85.8	213	355.6	451	412.8	7	41.3 (1-5/8)	20	1-1/2	558.8
400	16	705	-	88.9	216	406.4	508	469.9	7	44.5 (1-3/4)	20	1-5/8	616.0
450	18	785	-	101.6	229	457.0	565	533.4	7	50.8 (2)	20	1-7/8	685.8
500	20	855	-	108.0	248	508.0	622	584.2	7	54.0 (2-1/8)	20	2	749.3
600	24	1040	-	139.7	292	610.0	749	692.2	7	66.7 (2-5/8)	20	2-1/2	901.7

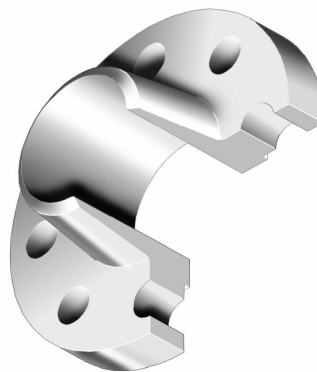
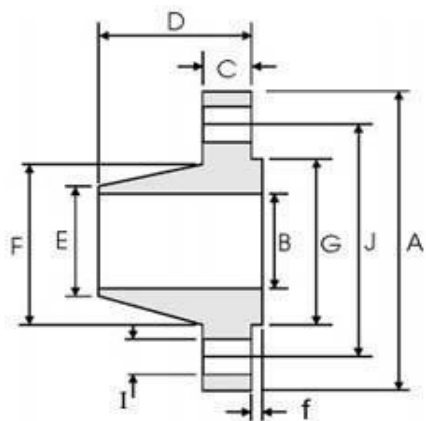
Dimension B to be specified by purchaser



Class 1500 (ASME B16.5)

DN	NPS	Overall Diameter	Inside Diameter	Thickness of Flange(Min.)	Overall Length	Diameter at Bevel	Diameter of Hub	Diameter of Face	Height of Face	Diameter of Bolt Holes (mm / in.)	Number of Bolts	Diameter of Bolt (in.)	Diameter of Bolt Circle
		A	B	C	D	E	F	G	f	I	n	J	
15	1/2	120	-	22.3	60	21.3	38	34.9	7	22.2 (7/8)	4	3/4	82.6
20	3/4	130	-	25.4	70	26.7	44	42.9	7	22.2 (7/8)	4	3/4	88.9
25	1	150	-	28.6	73	33.4	52	50.8	7	25.4 (1)	4	7/8	101.6
32	1 1/4	160	-	28.6	73	42.2	64	63.5	7	25.4 (1)	4	7/8	111.1
40	1 1/2	180	-	31.8	83	48.3	70	73	7	28.6 (1-1/8)	4	1	123.8
50	2	215	-	38.1	102	60.3	105	92.1	7	25.4 (1)	8	7/8	165.1
65	2 1/2	245	-	41.3	105	73.0	124	104.8	7	28.6 (1-1/8)	8	1	190.5
80	3	265	-	47.7	117	88.9	133	127	7	31.8 (1-1/4)	8	1-1/8	203.2
100	4	310	-	54.0	124	114.3	162	157.2	7	34.9 (1-3/8)	8	1-1/4	241.3
125	5	375	-	73.1	156	141.3	197	185.7	7	41.3 (1-5/8)	8	1-1/2	292.1
150	6	395	-	82.6	171	168.3	229	215.9	7	38.1 (1-1/2)	12	1-3/8	317.5
200	8	485	-	92.1	213	219.1	292	269.9	7	44.5 (1-3/4)	12	1-5/8	393.7
250	10	585	-	108.0	254	273.0	368	323.8	7	50.8 (2)	12	1-7/8	482.6
300	12	675	-	123.9	283	323.8	451	381	7	54.0 (2-1/8)	16	2	571.5
350	14	750	-	133.4	298	355.6	495	412.8	7	60.3 (2-3/8)	16	2-1/4	635.0
400	16	825	-	146.1	311	406.4	552	469.9	7	66.7 (2-5/8)	16	2-1/2	704.8
450	18	915	-	162.0	327	457.0	597	533.4	7	73.0 (2-7/8)	16	2-3/4	774.7
500	20	985	-	177.8	356	508.0	641	584.2	7	79.4 (3-1/8)	16	3	831.8
600	24	1170	-	203.2	406	610.0	762	692.2	7	92.1 (3-5/8)	16	3-1/2	990.6

Dimension B to be specified by purchaser



Class 2500 (ASME B16.5)

DN	NPS	Overall Diameter	Inside Diameter	Thickness of Flange(Min.)	Overall Length	Diameter at Bevel	Diameter of Hub	Diameter of Face	Height of Face	Diameter of Bolt Holes (mm / in.)	Number of Bolts	Diameter of Bolt (in.)	Diameter of Bolt Circle
		A	B	C	D	E	F	G	f	I	n	J	
15	1/2	135	-	30.2	73	21.3	43	34.9	7	22.2 (7/8)	4	3/4	88.9
20	3/4	140	-	31.8	79	26.7	51	42.9	7	22.2 (7/8)	4	3/4	95.2
25	1	160	-	35.0	89	33.4	57	50.8	7	25.4 (1)	4	7/8	108.0
32	1 1/4	185	-	38.1	95	42.2	73	63.5	7	28.6 (1-1/8)	4	1	130.2
40	1 1/2	205	-	44.5	111	48.3	79	73	7	31.8 (1-1/4)	4	1-1/8	146.0
50	2	235	-	50.9	127	60.3	95	92.1	7	28.6 (1-1/8)	8	1	171.4
65	2 1/2	265	-	57.2	143	73.0	114	104.8	7	31.8 (1-1/4)	8	1-1/8	196.8
80	3	305	-	66.7	168	88.9	133	127	7	34.9 (1-3/8)	8	1-1/4	228.6
100	4	355	-	76.2	190	114.3	165	157.2	7	41.3 (1-5/8)	8	1-1/2	273.0
125	5	420	-	92.1	229	141.3	203	185.7	7	47.6 (1-7/8)	8	1-3/4	323.8
150	6	485	-	108.0	273	168.3	235	215.9	7	54.0 (2-1/8)	8	2	368.3
200	8	550	-	127.0	318	219.1	305	269.9	7	54.0 (2-1/8)	12	2	438.2
250	10	675	-	165.1	419	273.0	375	323.8	7	66.7 (2-5/8)	12	2-1/2	539.8
300	12	760	-	184.2	464	323.8	441	381	7	73.0 (2-7/8)	12	2-3/4	619.1

Dimension B to be specified by purchaser